

Introduction à la ligne de commande sous Linux

damien.francois@uclouvain.be

UClouvain \ SST \ CISM

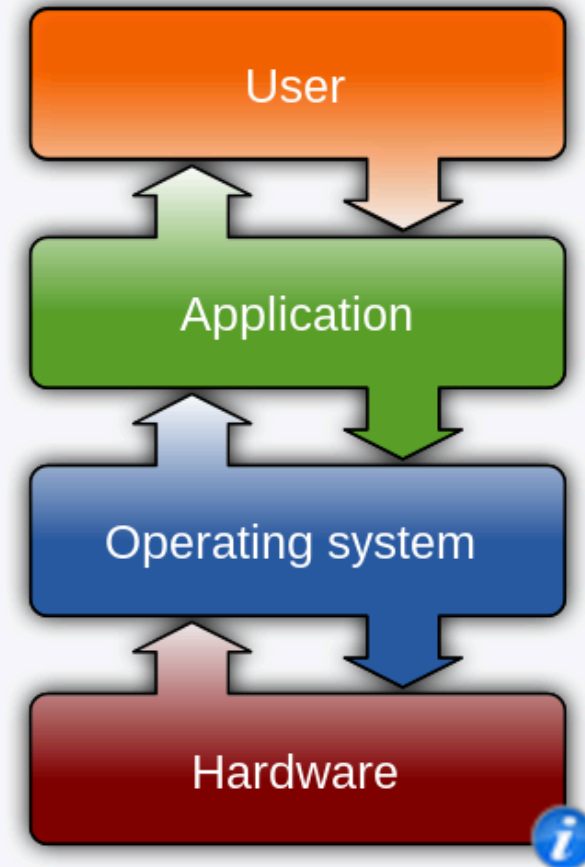
Agenda:

- Qu'est-ce que Linux?
- Qu'est-ce que la ligne de commande?
- Quand est-ce qu'on joue?

Systeme d'exploitation

- *operating system, OS*
- organise l'accès aux ressources au niveau d'un ordinateur
- permet de démarrer des programmes, gérer des fichiers, etc.
- interaction avec l'utilisateur:
 - le "bureau" (GUI)
 - le *shell* (CLI)

Operating systems



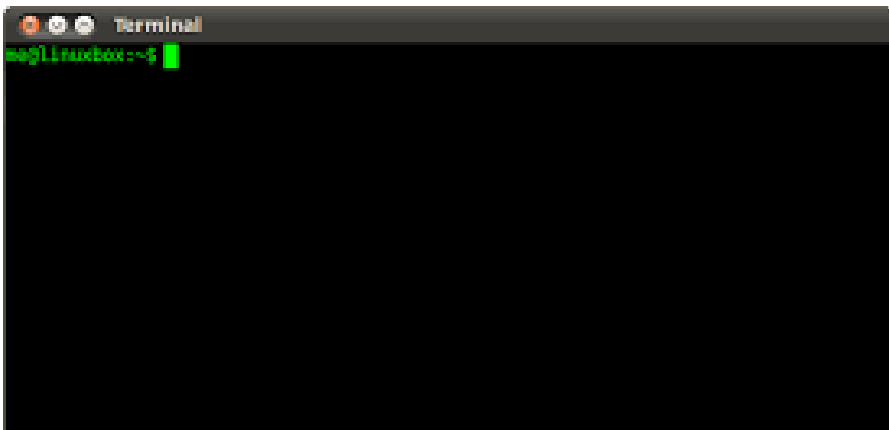
Common features

Process management · Interrupts ·
Memory management · File system ·
Device drivers · Networking · Security · I/O




</div> <div>

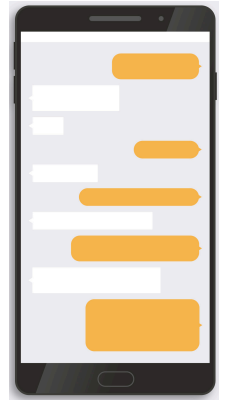
Le shell



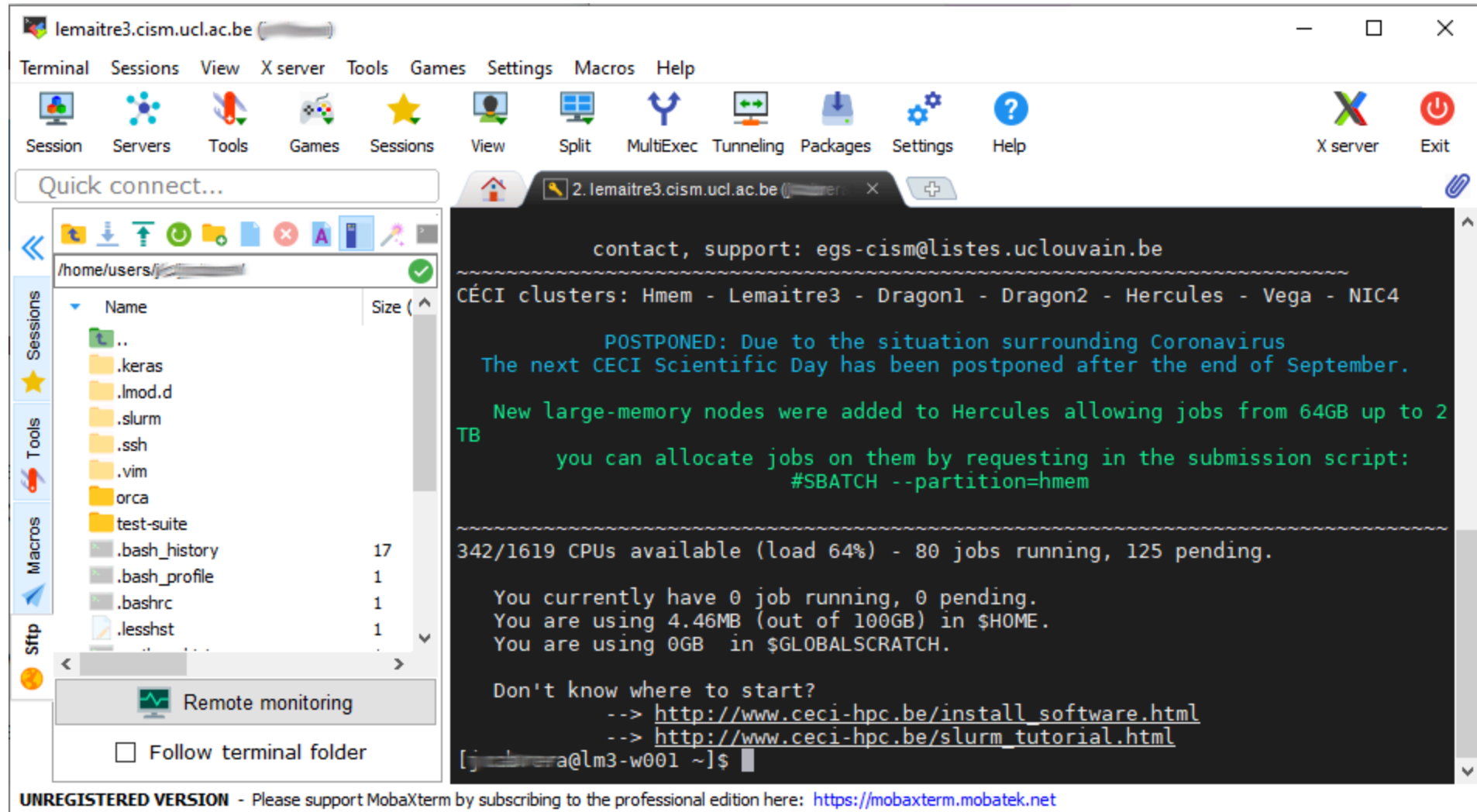
Le principe du shell:

- on écrit du texte "simplifié" à l'invite du *prompt* dans le *terminal*
- on appuie sur la touche `Enter` quand on a fini son message
- on attend la réponse, qui s'affiche quand elle est prête
- et on recommence 

Sur les serveurs de calcul Linux, le shell s'appelle `bash`



Le terminal de MobaXterm



c'est la partie sur fond noir ^^

La ligne de commande:

- une syntaxe de programmation rudimentaire
- des commandes de base du shell
- un ensemble d'outils en ligne de commande (GNU)
(dont des jeux)

Premier jeu "text-based": *Colossal Cave Adventure* 1975

```
.run adven
```

```
WELCOME TO ADVENTURE!!  WOULD YOU LIKE INSTRUCTIONS?
```

```
yes
```

```
SOMEWHERE NEARBY IS COLOSSAL CAVE, WHERE OTHERS HAVE FOUND FORTUNES IN  
TREASURE AND GOLD, THOUGH IT IS RUMORED THAT SOME WHO ENTER ARE NEVER  
SEEN AGAIN.  MAGIC IS SAID TO WORK IN THE CAVE.  I WILL BE YOUR EYES  
AND HANDS.  DIRECT ME WITH COMMANDS OF 1 OR 2 WORDS.  I SHOULD WARN  
YOU THAT I LOOK AT ONLY THE FIRST FIVE LETTERS OF EACH WORD, SO YOU'LL  
HAVE TO ENTER "NORTHEAST" AS "NE" TO DISTINGUISH IT FROM "NORTH".  
(SHOULD YOU GET STUCK, TYPE "HELP" FOR SOME GENERAL HINTS.  FOR INFOR-  
MATION ON HOW TO END YOUR ADVENTURE, ETC., TYPE "INFO".)
```

```
- - -
```

```
THIS PROGRAM WAS ORIGINALLY DEVELOPED BY WILLIE CROWTHER.  MOST OF THE  
FEATURES OF THE CURRENT PROGRAM WERE ADDED BY DON WOODS (DON @ SU-AI).  
CONTACT DON IF YOU HAVE ANY QUESTIONS, COMMENTS, ETC.
```

```
YOU ARE STANDING AT THE END OF A ROAD BEFORE A SMALL BRICK BUILDING.  
AROUND YOU IS A FOREST.  A SMALL STREAM FLOWS OUT OF THE BUILDING AND  
DOWN A GULLY.
```

```
east
```

```
YOU ARE INSIDE A BUILDING, A WELL HOUSE FOR A LARGE SPRING.
```

```
THERE ARE SOME KEYS ON THE GROUND HERE.
```

```
THERE IS A SHINY BRASS LAMP NEARBY.
```

```
THERE IS FOOD HERE.
```

On vous propose de jouer à

Gameshell

pour apprendre la ligne de commande Bash

1. se connecter à Manneback
2. taper `ml gameshell` puis
touche `Enter`
3. se laisser guider

